

G401W/G403M/G404M ---Transparent and white GG Module Encapsulation Solution 透明及白色双玻组件高效封装解决方案

G401W/G403M/G404M 产品介绍

双玻组件封装专用EVA胶膜，层压成品率高。

G401W/G403M/G404M 产品特点

1. 白色胶膜反射率高，明显提升组件效率。
2. 胶膜粗糙表面增加漫发射，提升组件效率。
3. G401W采用预交联工艺，白色层压无翻层、无溢白、无气泡、无并片及串间距变化。
4. 抗湿热老化及紫外老化能力强。
5. 优异的材料兼容性，与焊带及汇流带、电池片、玻璃等材料有良好的粘结性。
6. 层压简便，层压时间短，成品率高，可使用单腔层压机层压。

Introduction

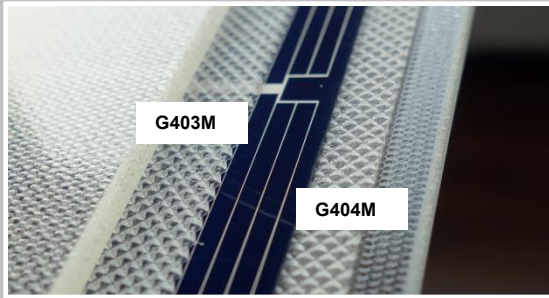
Special designing for GG PV Modules with high lamination yield.

Characteristics

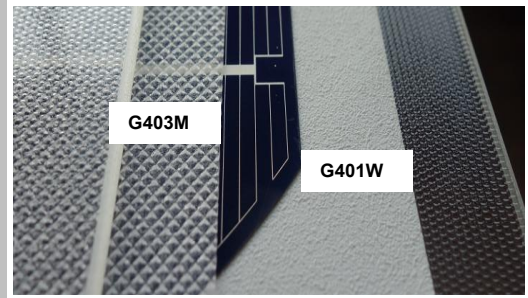
- 1.White EVA increase PV module power efficiency markedly.
2. G401W's rough surface increase light diffuse reflection and PV module power efficiency
3. Pre-cross linking G401W white EVA: No white color overflow, no bubble, no cell string moving .
- 4.Excellent durability, with good performance in DH & UV aging.
- 5.Outstanding material compatibility. Strong adhesive ability with welding belt ,cell, and glass.
- 6.Shorten laminating time, high yield, can be used in single chamber laminator .

型号 model	产品使用方法 Product use method
G401W	作为白色双玻组件下层胶膜使用 White color , use as bottom layer EVA of white GG modules.
G403M	透明EVA，作为双玻组件上层胶膜 Transparent EVA use as top layer EVA of transparent GG modules.
G404M	透明EVA，作为双玻组件下层胶膜 Transparent EVA use as bottom layer EVA of transparent GG modules.

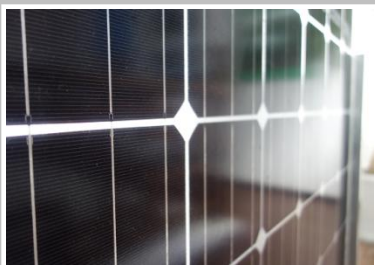
透明双玻组件敷设叠层
Transparent GG module laying



白色双玻组件敷设叠层
White GG module laying



透明单晶双玻组件
Transparent GG mono module



白色多晶双玻组件
White GG poly module



白色单晶双玻组件
White GG mono module

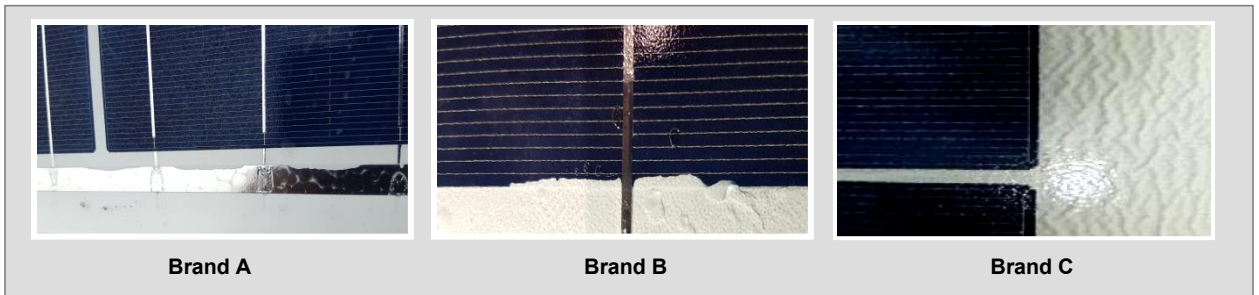


G401W/G403M/G404M ---Transparent and white GG Module Encapsulation Solution 透明及白色双玻组件高效封装解决方案

G401W /G403M/G404M 层压成品率高，无白色翻层，无气泡，无并片
High lamination yield, No white overflow, no bubble, no cell string moving .



其他品牌双玻组件封装胶膜出现的问题 Other brands encapsulating problems.



G401W /G403M/G404M建议层压工艺参数 Recommend lamination parameters.
Temp 140-155 C°, vacuuming 5-6 mins, increase and keeping pressure 14-16 mins.

S201W 性能参数 Property

性能Property	单位Unit	测试方法Test Method	G401W 白 White	G403M/G404M 透明Transparent
宽度Width	mm		970-1000	970-1000
厚度Thickness	mm		0.58±0.05	0.60±0.10
反射率Reflectivity (400-700nm)	%	HIUV method	>90	-
透光率 Light Transmittance (380-1100nm)	%		-	> 90
交联度Gel content (二甲苯140°C, 18min)	Gel%		>75	>75
收缩率Shrinkage Rate (120°C, 3min)	%		MD≤4.0	MD≤4.0
			TD≤1.5	TD≤1.5
VA含量VA content	%	TGA	28.5±2	28.5±2
与玻璃剥离强度Peeling Strength With glass	N/cm	ASTM D903	>50	>50
体积电阻率Volume Insulating Resistance	Ωcm	GB/T1410-2006	> 1*10 ¹⁴	> 1*10 ¹⁵
耐紫外黄变 UV Light Resistance (60kWh/ m2)	△YI	ASTM G154	<5.0	<5.0
耐湿热黄变Damp-Heat Resistance (85°C, 85%RH, 1000hr)	△YI	ASTM E313	<5.0	<5.0